



# GAT MONTHLY MEMBERSHIP PROGRESS REPORT

Results as of: 1/31/2023

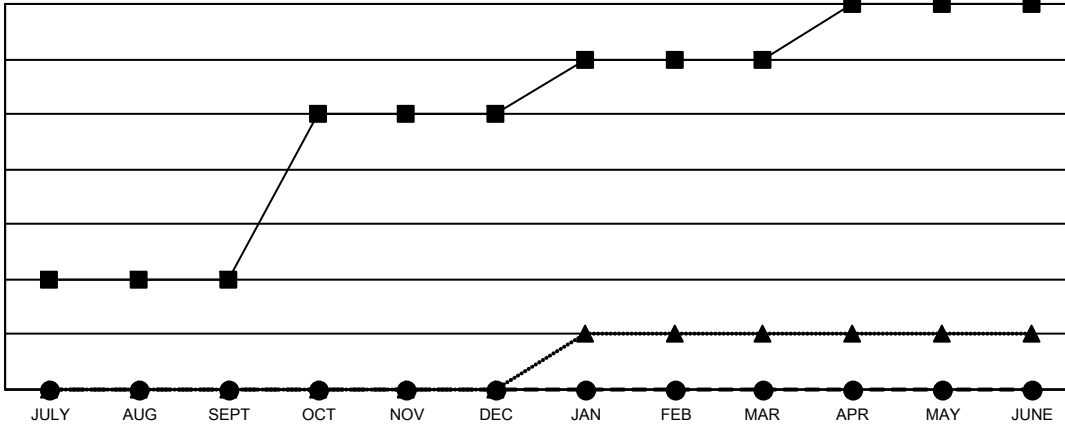
Multiple District 25

LOCATION: INDIANA

Clubs			
RESULTS FOR 2022-2023			
QUARTER	NEW CLUB GOAL	NEW CLUBS	DROPPED CLUBS
JULY/AUG/SEPT	2	0	2
OCT/NOV/DEC	3	0	6
JAN/FEB/MAR	1	0	0
APR/MAY/JUNE	1	0	0

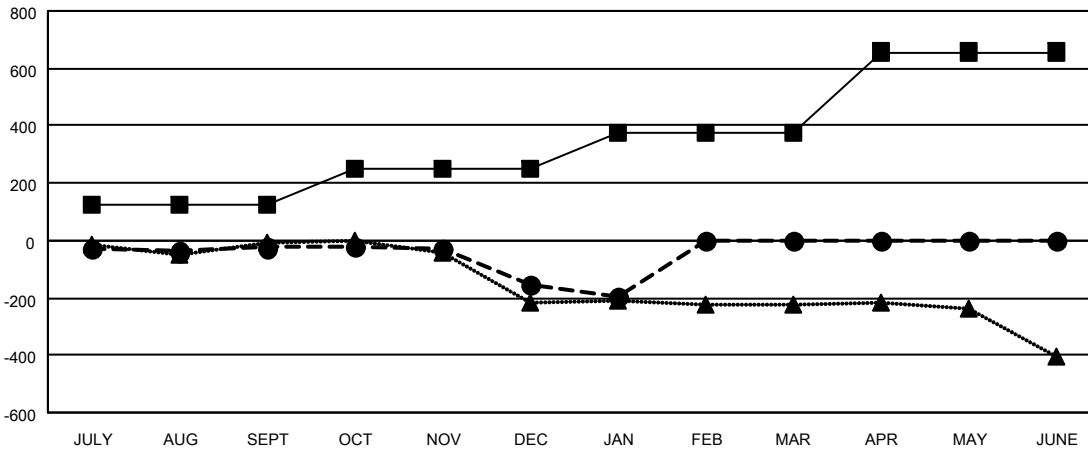
Members			
RESULTS FOR 2022-2023			
QUARTER	MEMBER GROWTH NET GOAL	MEMBER GROWTH ACTUAL	DROPPED MEMBERS ACTUAL (including transfers)
JULY/AUG/SEPT	125	231	191
OCT/NOV/DEC	126	131	251
JAN/FEB/MAR	127	74	91
APR/MAY/JUNE	279	0	0

GOALS AND ACTUAL NEW CLUBS CUMULATIVE



- CURRENT YEAR GOALS FOR NEW CLUBS
- CURRENT YEAR ACTUAL NEW CLUBS
- ▲- LAST YEAR ACTUAL NEW CLUBS

GOALS AND ACTUAL MEMBERS CUMULATIVE



- MEMBER GROWTH NET GOAL
- MEMBER GROWTH ACTUAL
- ▲- LAST YEAR MEMBERSHIP ACTUAL

<b>DROPPED CLUBS: 8</b>	130 CLUBS OF 345 ADDED 1 OR MORE NEW MEMBERS	<b>GENDER DISTRIBUTION</b>
<b>DROPPED MEMBERS</b>	<a href="#">CLICK HERE FOR CUMULATIVE MEMBERSHIP DATA</a>	MALE 5,736 (68.35%)
DECEASED 122		FEMALE 2,651 (31.59%)
CLUB CANCELLED 52		NON BINARY 0 (0.00%)
OTHER 359		PREFER NOT TO ANSWER 5 (0.06%)
<b>TOTAL 533</b>		<b>TOTAL FAMILY UNIT MEMBERS 2,082</b>
		<b>FAMILY MEMBERS PAYING HALF DUES 1,066</b>